

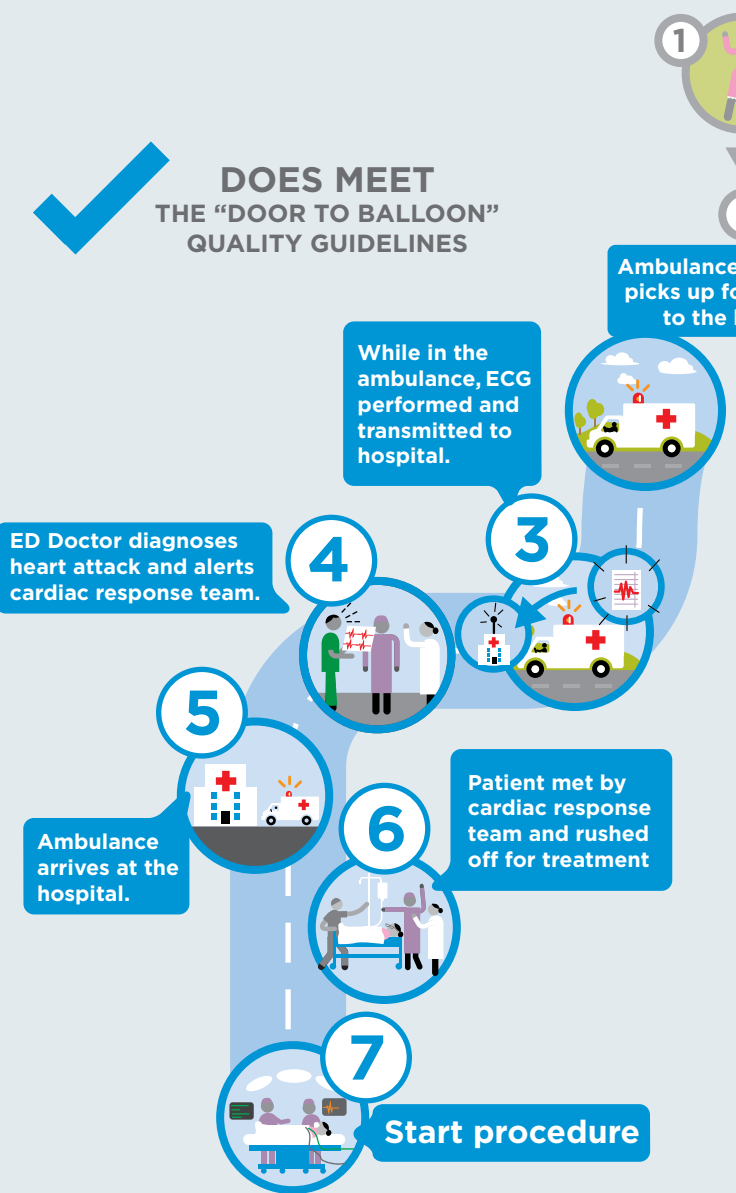
A Tale Of Two Hearts

TWO DIFFERENT JOURNEYS FROM THE DOOR TO BALLOON

"> 90 minutes after arrival = 42% higher risk of dying in the hospital,"
 Dr. Robert L. McNamara, M.D.¹



DOES MEET THE "DOOR TO BALLOON" QUALITY GUIDELINES



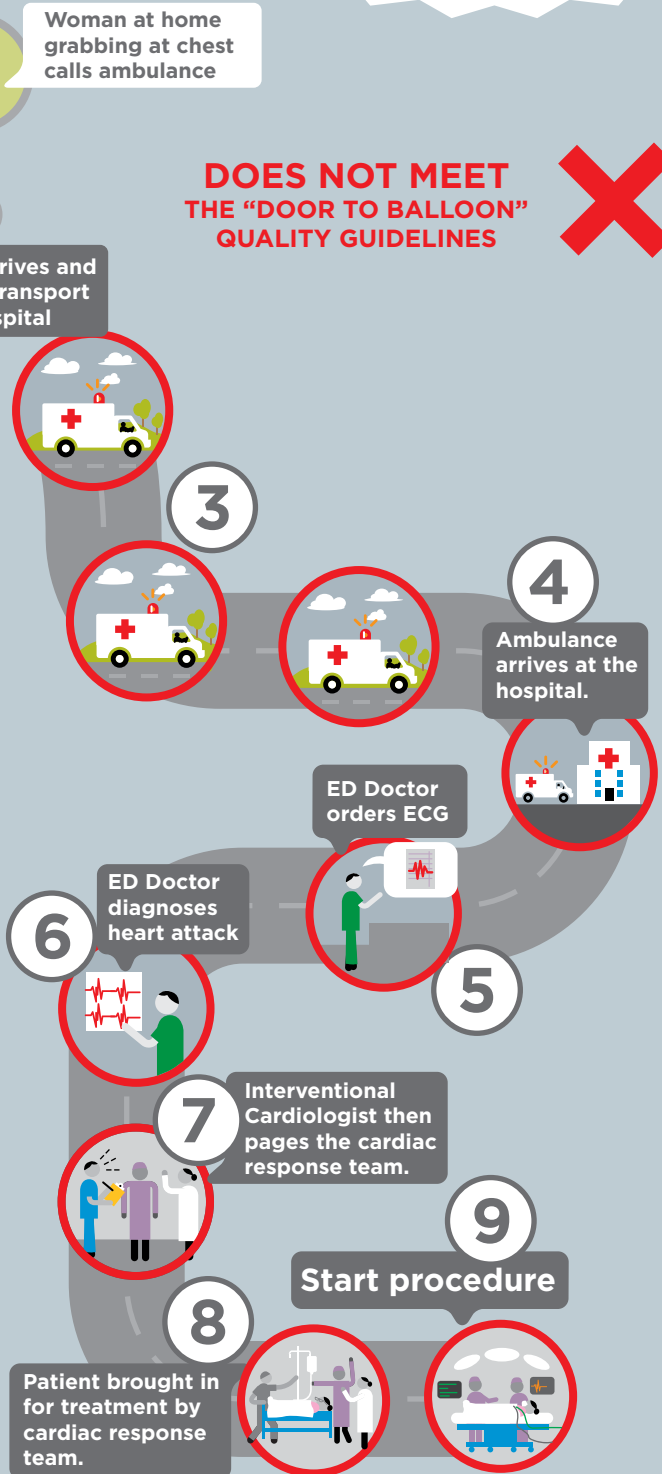
TOTAL ELAPSED TIME:

LESS THAN 90 MINUTES*

Endorsed Measure -
 < 90 minutes
 Door to Balloon time
 NQF Measure No. 0163



DOES NOT MEET THE "DOOR TO BALLOON" QUALITY GUIDELINES



TOTAL ELAPSED TIME:

90 MINUTES TO 2 HOURS

* Procedural timeline as published by the American College of Cardiologists. J Am Coll Cardiol. 2006;46(7):1236-1241

1 McNamara RL et al. "Effect of Door-to-Balloon Time on Mortality in Patients With ST-Segment Elevation Myocardial Infarction." J Am Coll Cardiol. 2006;47:2180-6